



# **ISM SEWING MACHINE**

- **APPERAL & LEATHER AUTOMETIC MACHINE CUT TO FINISH**
- **ALL TECHNICAL & SERVICE SUPPORT**
- **SPARE PARTS**

**15 A-K ROAD KADRI BUILDING, OPP.PUNJAB DAIRY,CHIMAT PADA MAROL NAKA,  
ANDHRI (EAST), MUMBAI - 400059. MOB. 7208268299**

**Email: [info@ismindia.net](mailto:info@ismindia.net) / Wesite: [www.ismsewingmachine.com](http://www.ismsewingmachine.com)**

# JEANS PANT-FRONT

Bartack



Sew Back Lable



Hem Back Pocket



Waist band corner Topstich



Automatic loop attaching machine



Eyelet Buttonhole



Pocket Binding



Waistband Atch



Pocket Facing



Sew Side 5 thread overlock



Bottom Hemming



Sew Inseam



Back Pocket Attaching Automatic





# SHIRT & COTTON PANT

**Sew Back Lable**

**Cuff & Color Fusing**

**Cloth Cutting**

**Straight Knife Cutting Machines**

**Eastman**  
Over a Century of Cutting Expertise

**Max Stroke 8**

- The world's most popular and most versatile straight knife cutting machine.
- Available in all standard international configurations, with the highest quality of materials and workmanship.
- Manufactured from superior grade materials in the United States of America.

**Button Hole Machine**

**Automatic Legger Pressing**

**Button Stich Machine**

**Front Placket Machine**



**Side Stitching**

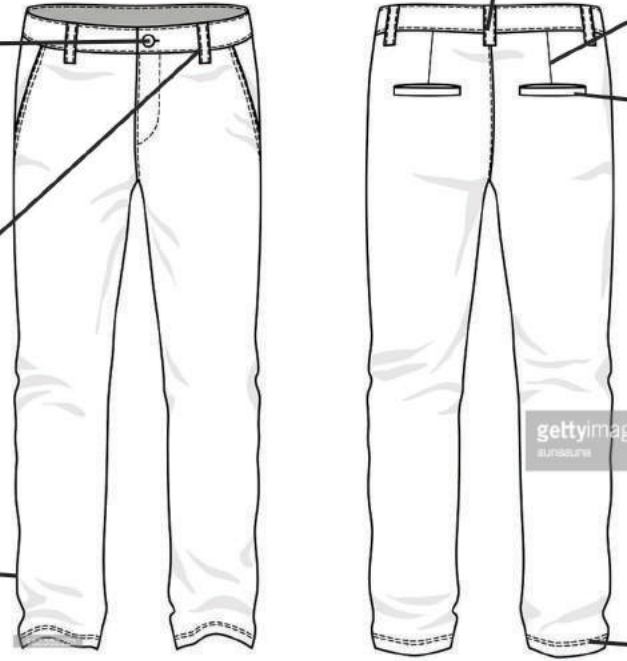
**Shirt Pressing Unit**

**Blind Loop Making Machine**

**Hemming Machine**

**Eyelet Buttonhole**

**Pocket Welding Machine**



**Bartack**

**Blind Stich Bottom Hemming Machine**

**4 Thread Overlock Machine**

## ISM SEWING MACHINE

Button Hole Machine



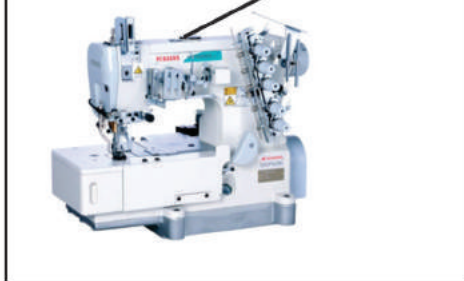
Button Stich Machine



4 Thread Overlock Machine



5 Thread Flat Lock Machine



Outer Elastic Flat Lock Machine



Four Thread Machine



Bend Knife Machine



## Cloth Cutting

### Straight Knife Cutting Machines

**Eastman**  
Over a Century of Cutting Expertise

**Blue Shark II**  
Model 2075

- The world's most popular and most versatile straight knife cutting machine.
- Available in all standard electrical configurations, with the highest variety of sizes and blade speeds in the industry.
- Manufactured from superior quality materials in the United States of America.

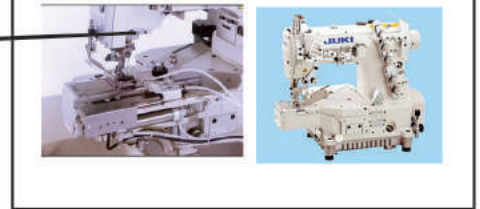
Hemming Machine



Round Neck Attaching Machine



Bottom Hemming Machine



Bartack



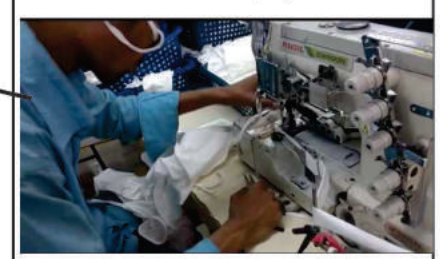
3 Step Zig Machine



Double Needle Machine



Flat Lock Piping Machine





**ISM SEWING MACHINE**

**Bartek Machine**



**1-needle, Top & Bottom-feed, Lock Stitch Machine with double Capacity Hook**



**Programmable Electronic Pattern Sewer**



**Post Bed-, Unison-feed, Lockstitch Machine with Vertical axis-Large Hook**



**Cylinder - bed, 1- Needle Unasion feed, Lock Stitch Machine with Vertical- Axis Large Hook**



**1- Needle Unasion feed, Lock Stitch Machine with Vertical- Axis Large Hook**



**Single Needle Large Hock Machine**





# ISM SEWING MACHINE

ALL TYPES OF

- APPERAL MACHINERY SOLUTIONS
- HEAVEY DUTY MACHINE FOR LEATHER
- FINISHING EQUIPMENT & SPARE PARTS

**JUKI**<sup>®</sup>

**Eastman**<sup>®</sup>



**MorganTecnica**  
innovation for textile industry

**JACK**

China No.1



15 A-K ROAD KADRI BUILDING, OPP.PUNJAB DAIRY,CHIMAT PADA MAROL NAKA,  
ANDHRI (EAST), MUMBAI - 400059. MOB. 7208268299

Email: [info@ismindia.net](mailto:info@ismindia.net) / Wesite: [www.ismsewingmachine.com](http://www.ismsewingmachine.com)